

Los Angeles Times

ILY / 1,332,875 SUNDAY

WEDNESDAY, MARCH 28, 1979

CC† / 126 PAGES



IN FLOOD'S WAKE—Carlotta Bennett attempts to clean up living room of her Mandeville Canyon home after rainwater poured off

fire-denuded hills and through the yard. The swimming pool was filled with mud and water; floors in the house were covered.

Times photo by Boris Yaro

2-Inch Rainfall Triggers Slides, Snarls Traffic

BY MYRNA OLIVER
Times Staff Writer

A storm-soaked Southern California with more than 2 inches of rain Tuesday, dumping half that amount during peak morning rush hours, triggering mudslides, flooding, surface streets, drowning out engines and revving up tempers.

More soggy weather was forecast for today, but the National Weather Service said the new precipitation should amount to only an inch or less during night and morning thundershowers.

However, a flash-flood warning was issued about 8 p.m. for coastal slopes of the San Gabriel Mountains between Altadena and La Crescenta, including Big Tujunga Canyon.

The weather service said the warning would stay in effect until 3 a.m. today.

Winds, which added to commuters' woes Tuesday, were expected to diminish today. The chances of getting wet on the way to work today are about 70%, sliding to 20% by tonight's rush homeward.

But looking ahead the NWS advised against dropping raincoats off at the cleaners. More showers are expected Saturday.

The storm kept the area cool, with a high of 62 at Los Angeles Civic Center along with the 2.11 inches of rain Tuesday. A Civic Center high in the upper 50s was expected today after overnight lows in the upper 40s.

Tuesday's rainfall brought the season total to 18.48 inches, compared to 30.93 inches at this time last year and a normal rainfall of 12.39.

Mudslides in Malibu complicated commuting early Tuesday, and weather postponed scheduled dynamiting of rock and shale covering Kanan Dume Road. That road, closed

Please Turn to Page 3, Col. 2

Storm Dumps 2 Inches of Rain; More Is Due Today

Continued from First Page

by a slide Monday, remains closed today.

Malibu Canyon Road was closed Tuesday and will remain closed today from Civic Center Way to Mulholland Highway because of a slide near the tunnel three miles north of Pacific Coast Highway.

Pacific Coast Highway remained open, but some lanes were blocked at various points by rock and mudslides.

Several residents along Broad Beach Road stayed home Tuesday to sweep out mud and water that raced down hillsides denuded by the major brushfire last Oct. 23.

"I woke up this morning to the familiar sound of waves. But the waves I heard were the mud and water in the house," said Mrs. George Gage, sloshing through her house in bright green boots, awaiting 15 Pepperdine University students who had volunteered to sandbag the area.

Her next door neighbor, John Boyer, said sandbags outside his house did not prevent water and an inch of

mud from coming in. He said he had to rescue his jeep early Tuesday, because it actually started floating on the water.

Destruction of ground cover by last fall's fires also was blamed for mudslides along Mandeville Canyon Road. Homeowners mopped floors, cleaned swimming pools and dug out mailboxes during the day.

In Orange County, officials kept a wary eye on a plastic-covered area of Bluebird Canyon where a mudslide last October destroyed 22 homes. The nearly 2 inches of rain there also caused an estimated \$1 million damage to strawberry crops and caused power outages to 3,000 homes in El Toro, Cypress and La Palma.

The storm edged off in San Diego County, providing only .17 of an inch of rain at Lindbergh Field. The rainfall brought the season total there to 14.28 inches, compared to last year's 17.4 and the normal of 8.26 inches.

Los Angeles commuters were further frustrated Tuesday morning by a rash of accidents, accented by a 5:30 a.m. collision of a soft drink truck, pickup truck and car on the northbound Santa Ana Freeway at Atlantic Blvd. No injuries were reported and one northbound lane was reopened within half an hour, but the crash added a ripple effect to the

Please Turn to Page 19, Col. 1

2-Inch-Rainfall Triggers Mudslides, Snarls Traffic

Continued from Third Page
freeway backlog throughout rush hour.

A 26-year-old Los Angeles man and three Los Angeles women were hospitalized after a 17-car, chain-reaction pileup on the northbound Hollywood Freeway at Barham Blvd. at 5:45 a.m.

The California Highway Patrol said the accidents started after the man, driving too fast for the heavy rain, lost control of his car and spun into the center divider. The other cars crashed trying to avoid him and the subsequently wrecked vehicles.

The CHP said its officers were swamped with accident calls, mostly fender-benders, but reported no fatalities throughout the dreary day.

CHP officer Casey Bos, 25, was treated for minor back and neck injuries and released from Pomona Valley Community Hospital after a moving car struck his parked patrol car on the San Bernardino Freeway at Kellogg Drive. Bos was interviewing drivers involved in a previous two-car collision, conducting the inquiry in his car because of the rain.

Los Angeles CHP Operations Officer Jim Jackson said the Hollywood and Santa Ana freeways won Tuesday's demolition derby. They had the most accidents, he estimated, but then they usually do.

Flooded surface streets throughout the Los Angeles Basin caused engines to drown out and rendered some brakes useless, complicating the traffic snarl and contributing to commuters' tardiness at the office.

Two 17-year-old Downey boys

who decided to try driving a four-wheel-drive Toyota jeep down the Rio Hondo settlement basin mired the vehicle up to its front axle and had to be rescued by Downey police and a tow truck. They were unhurt.

Because of high winds, the CHP warned drivers with trailers or campers to avoid a 20-mile stretch of Interstate 5 from Templin Highway to the Kern County line and Interstate 15 through the desert area.

High winds and seas pushed the tanker Manhattan into the Catalina King and Monarch excursion boats at the Catalina boat dock under the Vincent Thomas Bridge in Los Angeles Harbor Tuesday as the tanker was being towed out to sea about 4 a.m.

About 200 gallons of light diesel oil from a ruptured fuel line on the dock spilled into the harbor. The Coast Guard put a floating boom around the spill and will contract for its cleanup. The vessels and the dock suffered only minor damage.

The NWS left in effect through this morning a small craft advisory from Point Conception to the Mexican border.

The snow level in Southland mountains was about 4,500 feet. The CHP said chains were required above that level.

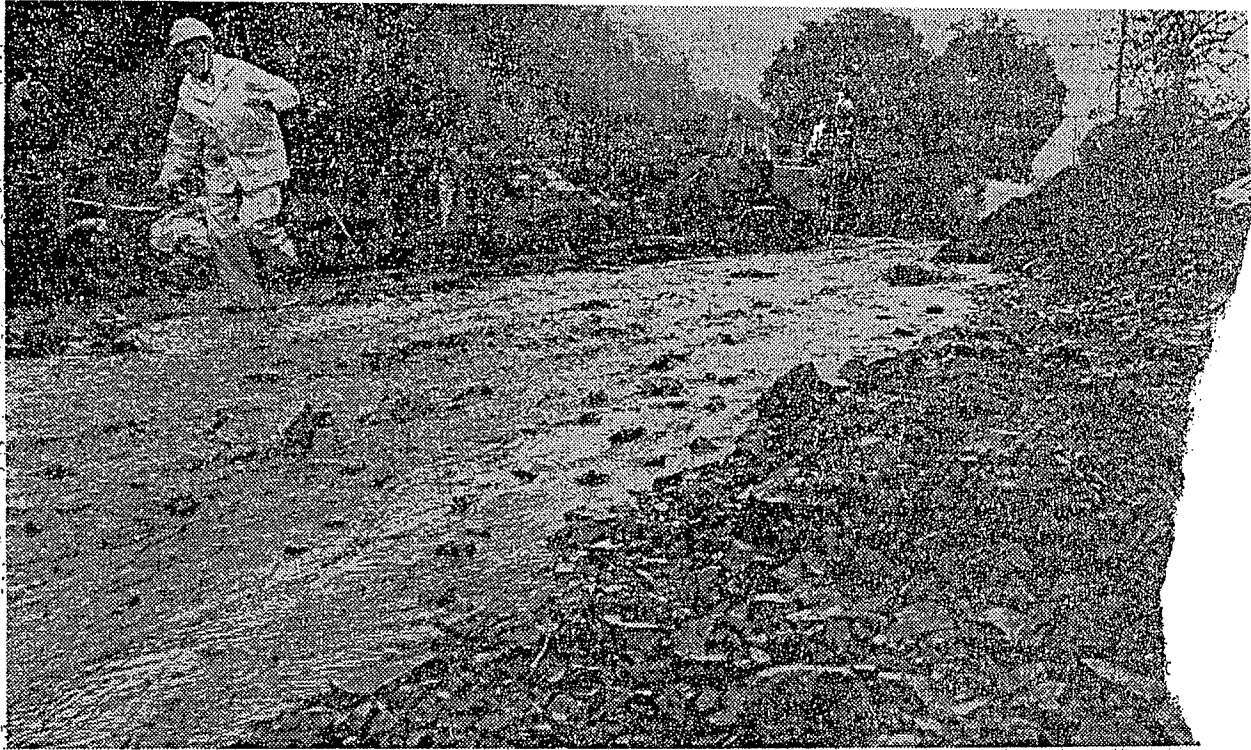
Roads affected included Angeles Crest Highway beginning 18 miles north of Foothill Blvd. and through to Kratka Ridge and from Wrightwood to Big Pine.

In the San Bernardino Mountains, chains were required on California 18 from Santa's Village to Big Bear City and on California 38 from Camp Angeles to Big Bear Dam.

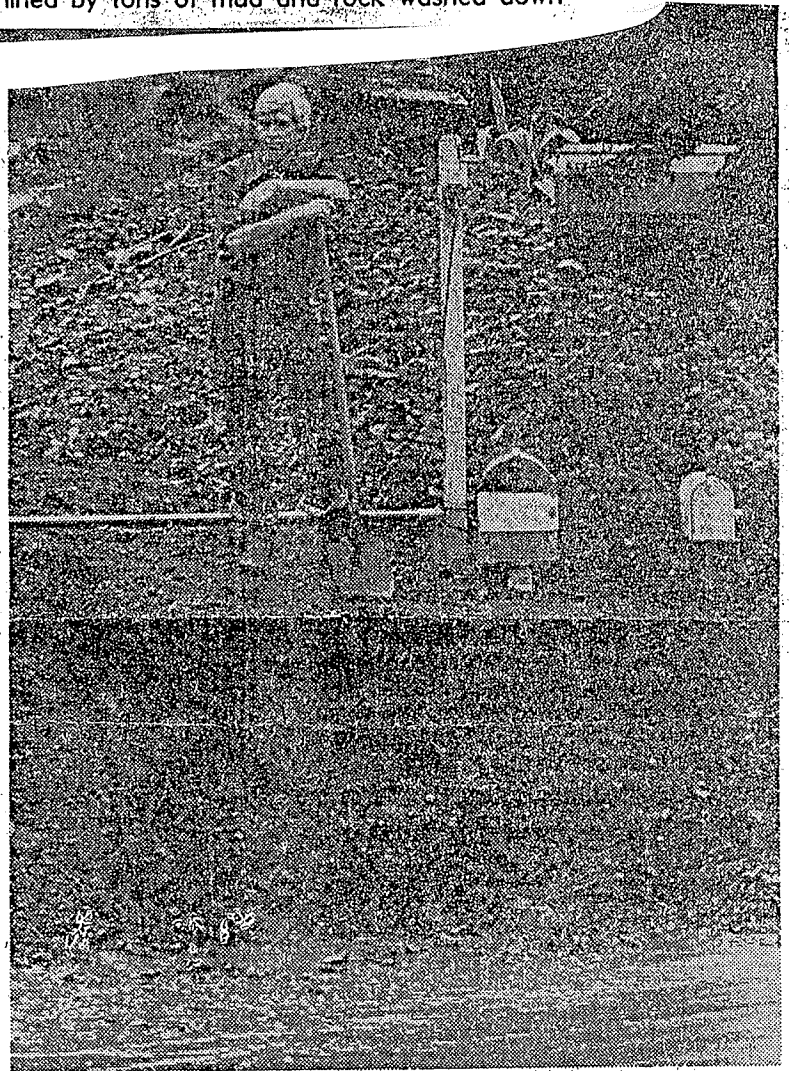


REMOVING A 'PLUG'—Maintenance crewmen work to open drainage in rock-filled ditch paralleling Mandeville Canyon Road.

Times photo by Boris Yaro



DEPOSITED BY FLOOD—Mandeville Canyon Road is lined by tons of mud and rock washed down



DISHEARTENING TASK—Carl Williams atop 4 feet of mud and rock that nearly engulf mailboxes of Mandeville Canyon homes.

Times photos by Boris Yaro